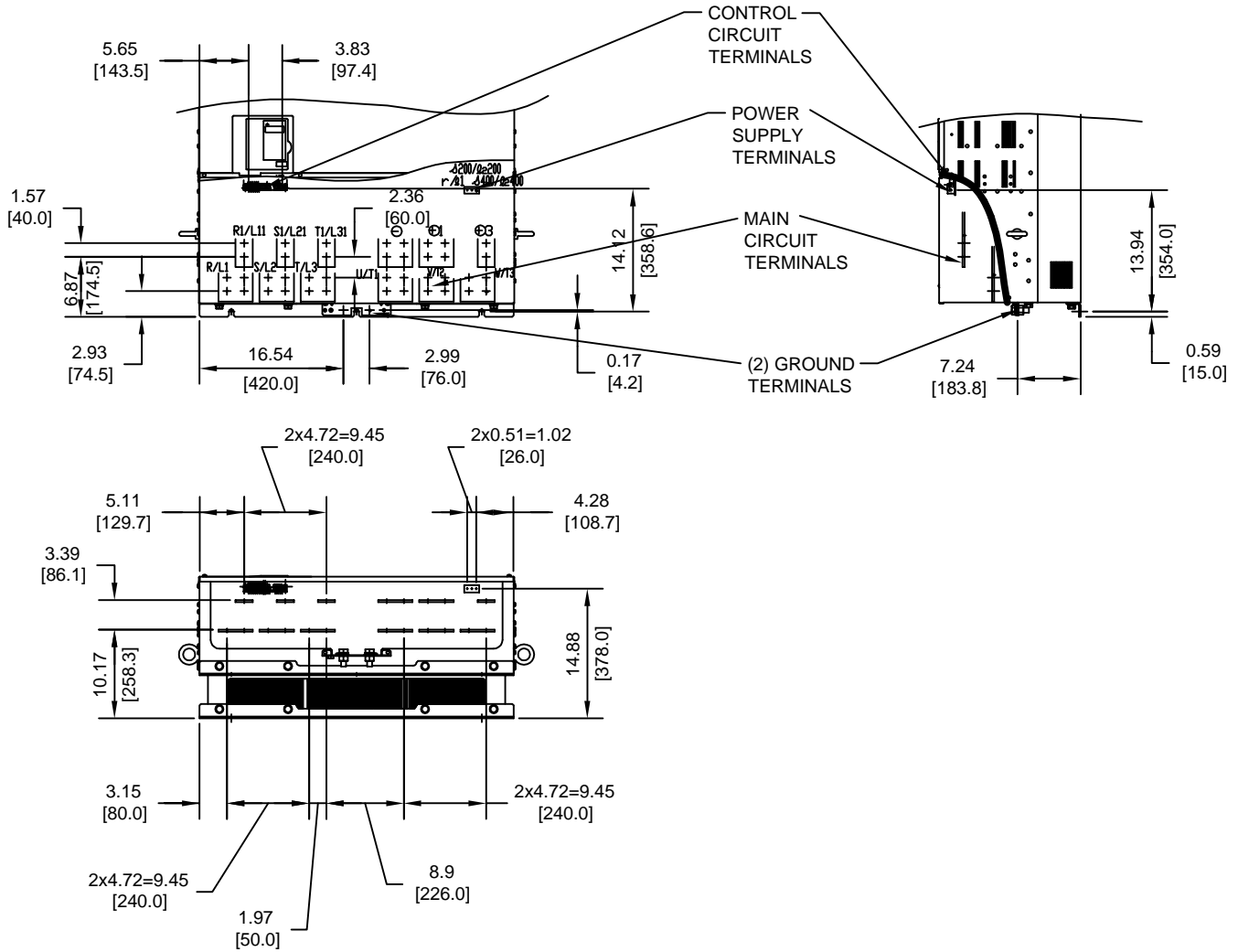


FOR ADDITIONAL DETAILS AND SPECIFICATIONS, CONSULT MANUAL

TOLERANCES/REFERENCES: - - - - - - - - - - -	<p><b>YASKAWA</b> A World of Automation Solutions™</p> <p>YASKAWA ELECTRIC AMERICA, INC. Corporate Headquarters 2121 Norman Drive South Waukegan, IL 60085 1-800-YASKAWA http://www.yaskawa.com</p>	DRAWN: J. MATTAS DATE 5-2-05	TITLE: P7 DIMENSION DRAWING FRAME SIZE 15 IP00 ENCLOSURE P7U4300			
		CHECKED: M. RUCINSKI DATE 6-6-05	DATE 6-6-05	REVISION R00	PAGE 1 of 3	
		TECH: J. CAIRO DATE 5-4-05	DATE 6-6-05	SIZE A	DRAWING #: DD.P7.FR15.IP00.01	
		APPROVED: T. SASADA DATE 6-6-05	ORIGINAL DESIGN: - DATE -			

UNITS: IN[mm] SCALE: 1:20

TERMINAL AND WIRING DETAILS (SCALE 1:20)



TERMINAL AND WIRE SPECIFICATIONS FOR  
MAIN CIRCUIT AND GROUND

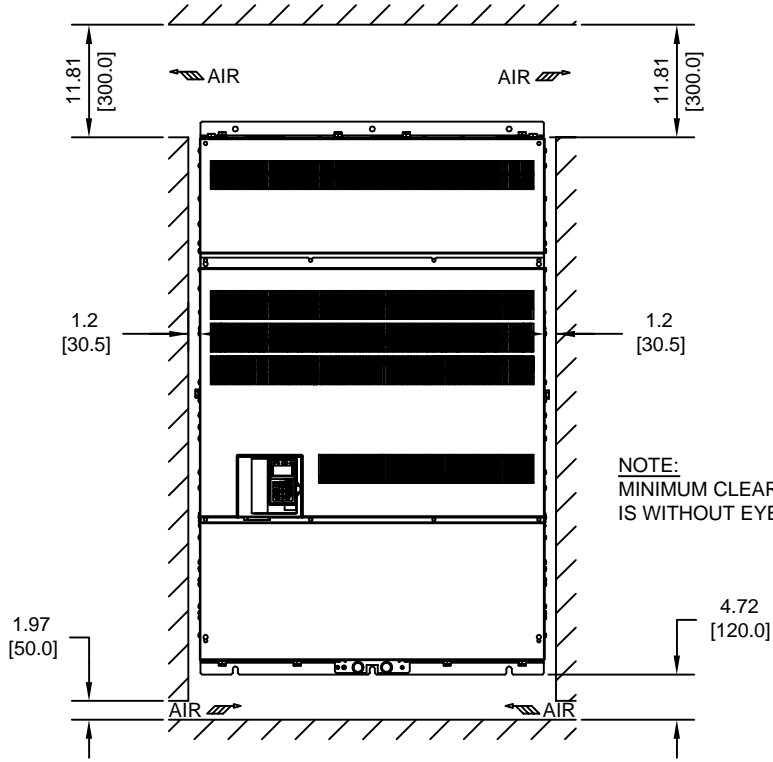
MODEL #	TERMINAL SYMBOL	TERMINAL SCREW	CLAMPING TORQUE lb.in.(N.m.)
CIMR-P7U	R/L1, S/L2, T/L3, U, V, W, G1, G2, G3, U/T1, V/T2, W/T3, R1/L11, S1/L21, T1/L31	M16	694 TO 867 (78.4 TO 98.0)
4300	r1, s200, s400, s400	M4	11.4 TO 12.3 (1.3 TO 1.4)

NOTE: REFER TO APPLICABLE CODES FOR PROPER WIRE TYPE AND SIZE

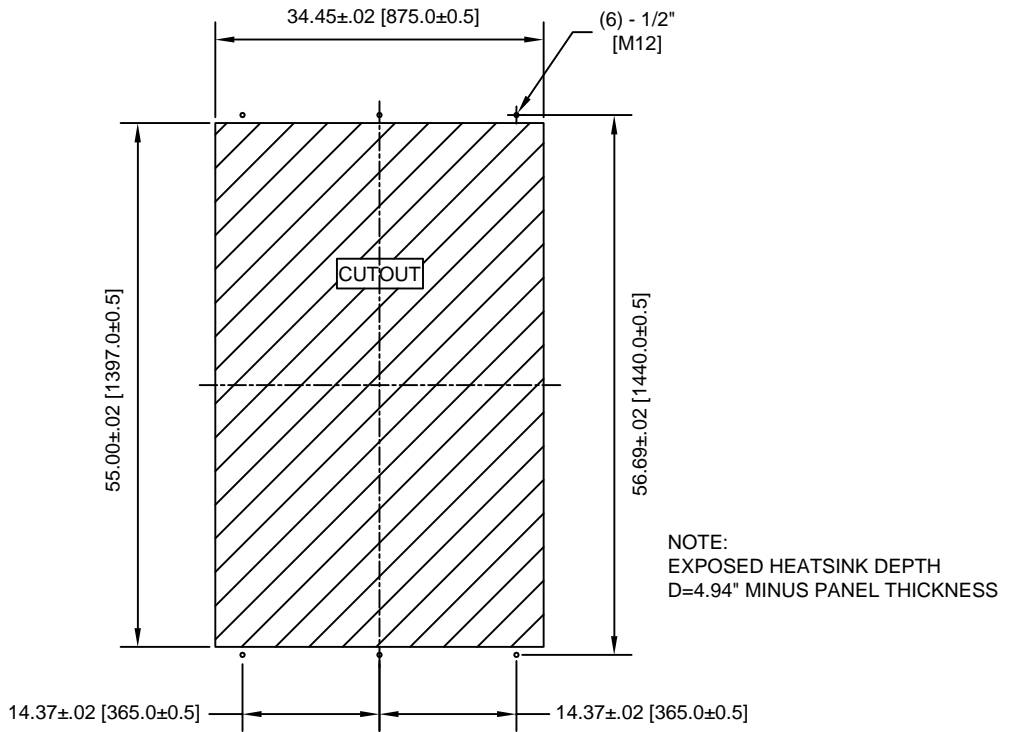
FOR ADDITIONAL DETAILS AND SPECIFICATIONS, CONSULT MANUAL

TOLERANCES/REFERENCES: - - - - - -	<p><b>YASKAWA</b> A World of Automation Solutions™</p> <p><b>YASKAWA ELECTRIC AMERICA, INC.</b> Corporate Headquarters 2121 Norman Drive South Waukegan, IL 60085 1-800-YASKAWA http://www.yaskawa.com</p>	DRAWN: J. MATTAS	DATE 5-2-05	TITLE: P7 DIMENSION DRAWING		
		CHECKED: M. RUCINSKI	DATE 6-6-05	FRAME SIZE 15		
		TECH: J. CAIRO	DATE 5-4-05	IP00 ENCLOSURE		
		APPROVED: T. SASADA	DATE 6-6-05	P7U4300		
UNITS: IN[mm]	SCALE: BY VIEW	ORIGINAL DESIGN: -	DATE -	SIZE A	REVISION R00	PAGE 2 of 3
				DRAWING #: <b>DD.P7.FR15.IP00.01</b>		


MINIMUM INSTALLATION CLEARANCES (SCALE 1:20)



PANEL CUTOUT FOR EXTERNAL HEATSINK MOUNTING CONFIGURATION (SCALE 1:20)



FOR ADDITIONAL DETAILS AND SPECIFICATIONS, CONSULT MANUAL

TOLERANCES/REFERENCES: - - - - - - - - - -	 <b>YASKAWA</b> <i>A World of Automation Solutions™</i> <b>YASKAWA ELECTRIC AMERICA, INC.</b> Corporate Headquarters 2121 Norman Drive South Waukegan, IL 60085 1-800-YASKAWA <a href="http://www.yaskawa.com">http://www.yaskawa.com</a>	DRAWN: J. MATTAS	DATE 5-2-05	TITLE: P7 DIMENSION DRAWING		
		CHECKED: M. RUCINSKI	DATE 6-6-05	FRAME SIZE 15		
		TECH: J. CAIRO	DATE 5-4-05	IP00 ENCLOSURE		
		APPROVED: T. SASADA	DATE 6-6-05	P7U4300		
UNITS: IN[mm]	SCALE: BY VIEW	ORIGINAL DESIGN: -	DATE -	SIZE A	REVISION R00	PAGE 3 of 3
				DRAWING #: <b>DD.P7.FR15.IP00.01</b>		